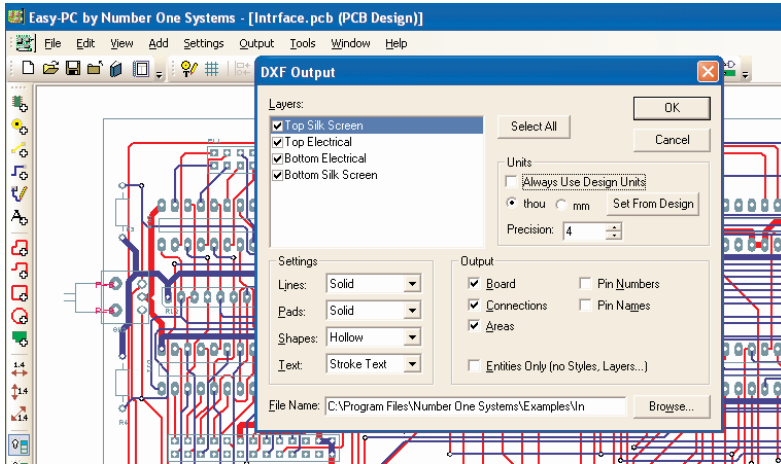


## IDF 3.0 Export



The IDF 2.0 and 3.0 export option allows you to export your designs into your mechanical CAD (CAD) system using the industry standard IDF format.

IDF provides an alternative format to DXF for systems which do not support the AutoCAD format. IDF has become more of a standard with the higher end 3D MCAD systems especially where solid modelling is used.

### IDF Export

The IDF option exports two files for both format types. These two files define the board outline and component positions, and the component boundary, height, units and part name.

This information is used by the MCAD system to create the board and show a representative 'picture' of the finished populated PCB design.

Version 3.0 of IDF also supports the mounting offset of the component above the PCB itself. This would be used if the component requires a socket or special mounting feature to be defined and allowed for when showing its true height.

This value would be in addition to the component height value defined.

### Prerequisites For Using IDF Export

IDF Export works with and requires any Easy-PC For Windows V9.0 or a later version.

### Features

- Outputs both IDF 2.0 and 3.0 formats (switchable)
- Integrated into the Easy-PC For Windows PCB Design editor
- Dialog driven for simplicity
- Outputs files for board and component definitions
- Includes attribute driven interface for height information transfer
- Seamless integration with your mechanical CAD system